

SG-L 6550

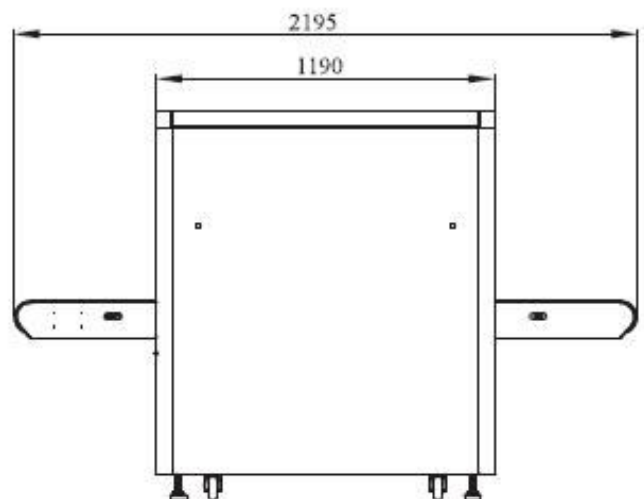
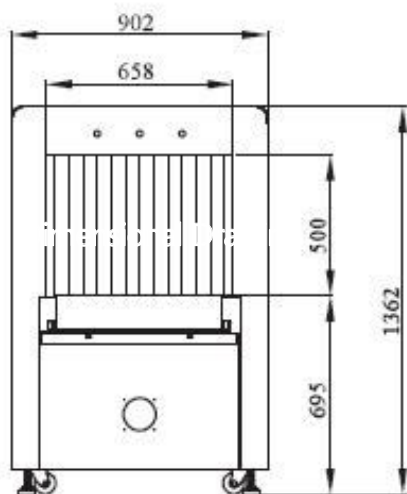
X-Ray Baggage Scanner

Product Highlights

- * Multilingual operation
- * Automatic built in test and self diagnosis
- * Secure access Key
- * Continuous working 10000 hours above
- * Threat alert and material classification
- * International standard configuration:
- * Network-Ready
- * Energy saving design
- * One key turn off
- * Drugs and explosives inspection
- * Indication of the date and time



Dimensional Drawing



Important Sizes :

Product Size: 2195* 902 * 1362mm (L x W x H)

Tunnel Size: 658* 500mm (width x height)

General Specifications

- Wire Resolution
- Penetration resolution
- Spatial resolution
- Penetration
- Resolution of organic matter
- Grayscale and mixture resolution
- Resolution of inorganic objects
- Effective material resolution
- X-Ray dosage each inspection
- Boundary Leakage
- S/N ratio
- Conveyor speed
- Conveyor max load
- Power consumption
- Safety performance requirements
- EMC requirements
- Electrical safety
- Environmental applicability
- Leakage current
- Film Safety
- Weight
- Operation temperature/Humidity
- Storage temperature/Humidity
- Atmospheric pressure
- Operation Power
- Operation system

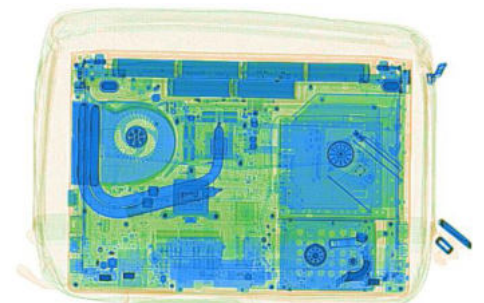
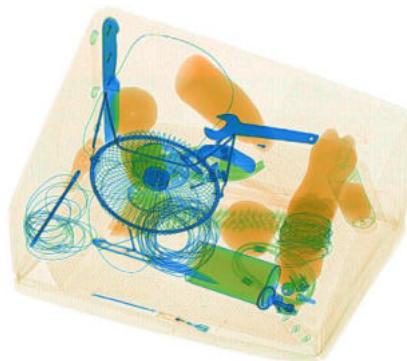
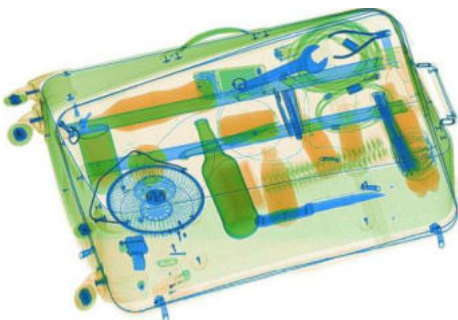
Typical AWG40
 Typical AWG32
 Vertical:1.0mm, horizontal:1.0mm
 30mm
 1 - 120 mm
 1 - 60mm
 0.2-14mm
 Meet the requirements of GB15208.1-2005
 $\leq 2.5 \mu\text{Sv}(\text{uGy})$
 $\leq 0.5 \mu\text{Sv} / \text{h}(\text{uGy}/\text{h})$
 $< 60\text{dB}$
 0.2m/s
 150kg
 0.8KVA
 Meet the requirements of GB15208.1-2005
 Meet the requirements of GB15208.1-2005
 Meet the requirements of GB15208.1-2005
 Meet the requirements of GB15208.1-2005
 $\leq 5.0\text{mA}$
 Guarantee ASA/ISO1600 Film
 480kg
 $5^{\circ}\text{C}-40^{\circ}\text{C}/0\%-90\%$
 $-20^{\circ}\text{C}-60^{\circ}\text{C} / 10\%-90\%$
 $86\text{kPa}-106\text{kPa}$
 $\text{AC}220\text{V}(\pm 10\%-15\%) 50\pm 3\text{Hz}$
 Windows XP

General Specifications

- X ray generator
- Electric roller
- Computer
- Monitor
- Operation console

140KV, oil cooling, from bottom to top
 Three-phase
 CPU: Intel Celeron 2.70GHz, Hard drive: 500G, Storage : 2G
 21.5" LED screen, resolution: 1280*1024 pixels
 Single screen console

Scanned images



Functional characteristics

■ Power-on self-test	With the function of fault self-check, automatically judge the fault and prompt the fault code information in time.
■ Image processing	With the function of Color/BW, negative, high/low penetration, organic /inorganic stripping, general enhancement, and pseudo color, etc.
■ Image Recall	30 preceding images recallable.
■ The number of images stored	Up to 10,000 images stored automatically.
■ Image management	With the functions of image information query, open, export and print, 6 image formats can be exported (JPG, BMP, XF, PNG, TIFF, GIF)
■ Operator management	Operators can be added and deleted, and operator names, groups, passwords, enabled status can be modified, and usage logs can be exported.
■ Dangerous goods image insertion	TIP insertion pictures can be added and deleted, TIP enable status, injection interval, floating range, motion determination time, and stationary determination time can be set; the user can check the operator by recording information.
■ Equipment diagnosis	Key components of equipment can be diagnosed through the diagnostic interface, including detector, motor positive and negative rotation, infrared sensor, special keyboard, etc.
■ System Settings	Programmable key, imaging display (horizontal, vertical image, maximum magnification, display recovery), scanning mode setting (two-way, direction, strong scanning, energy saving), auxiliary inspection (difficult to penetrate, explosives, drugs), luggage counter function Settings.
■ System equipment information	Display software version, equipment model, factory number, scan count, power on time, beam out time, image file storage capacity and other information. Able to conduct automatic through-baggage training for new operators.
■ Training function	Able to conduct automatic through-baggage training for new operators.

Compliance

■ International	<ul style="list-style-type: none"> * ISO19001 ; ISO14001 ; ISO27001 ; OHSMS18001 ; * CE , ROHS, FCC, REACH * USA, FDA
■ National	<ul style="list-style-type: none"> * Health Inspection Report * Computer Software Copyright Registration Certificate * Software Product Registration Certificate * Radiation Safety Certificate from Ministry of Public Security * Quality Certification from Safety and Police Electronic Products Quality Inspection Center * Design patent certification